

# Health Equity Resources

Fall, 2011

Health equity resources from the Wellesley Institute. Visit us online at [www.wellesleyinstitute.com](http://www.wellesleyinstitute.com) for free downloads, news, blogs, and extensive resources in health equity, community-based research, housing, income inequality, and immigrant health.

## Health Equity Into Action: Planning and Other Resources for LHINs

This resource provides a range of tools, techniques, and resources LHINs, and the providers and stakeholders health equity strategies and initiatives in the most effective ways for their regions and needs.

### 1. Introduction

- Why Health Equity
- Context
- What This Resource Provides

### 2. The Problem to Solve: Health Inequalities in Ontario

- How To Analyze the Social Determinants of Health

### 3. Thinking About/Acting on Equity

- Definitions



## Health Equity Into Action: Planning and Other Resources

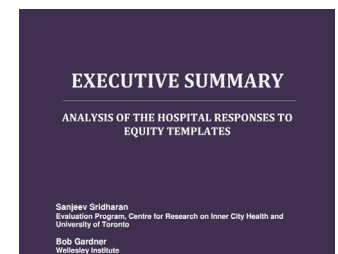
This online resource is about moving from strategy to practice — operationalizing equity within the health system. It provides a range of tools, techniques, briefing notes, research findings and other resources that LHINs, and the providers and stakeholders they partner with, can use to implement health equity strategies and initiatives in the most effective ways for their regions and needs.

The basic format is essentially to match proven tools, techniques and experience to LHINs and provider requirements. For example, to operationalize equity, LHINs will need to be able to ensure equity is embedded into provider planning and service delivery. One promising mechanism several LHINs have used is to have providers make equity plans for their organizations. Resources on how this has worked are set out.

<http://www.wellesleyinstitute.com/resource/health-equity-into-actionplanning-and-other-resources-for-lhins/>

## Hospital Equity Plans

Several LHINs have had their provider partners develop equity plans. These have proven very useful in driving awareness and planning within the organization, in supporting a wide range of front-line equity innovations, and in identifying access barriers, gaps and common challenges across the system. This site has our analysis of the second generation of Toronto Central LHIN hospital equity plans: it highlights and lists promising equity innovations, analyzes how equity is being embedded within hospitals' working cultures and planning processes, and makes action recommendations for building on these plans. <http://www.torontoevaluation.ca/tclhinrefresh/>

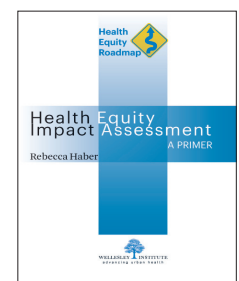


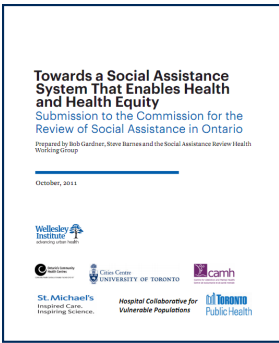
## Equity Strategy for Toronto Central LHIN

Wellesley developed a strategic framework for Toronto Central LHIN that has been extensively used in guiding their health equity strategy. While local conditions and priorities vary and strategies developed for particular contexts may not be applicable in other LHINs, this strategy could be a useful starting point for others.

## Evidence-Based Planning Tools: Health Equity Impact Assessment

To drive health equity into action we need to understand the needs of health disadvantaged populations, identify barriers to equitable access to quality care, and build equity into priority setting, resource allocation and performance management. That means we need a repertoire of effective equity-focused planning tools. HEIA is one key tool that analyzes the potential impact of service, program or policy changes on health disparities and/or health disadvantaged populations. It can help to plan new services or initiatives, assess and re-align existing programs, and build awareness of equity within organizations. This primer is accompanied by workshops and other resources on implementing HEIA. <http://www.wellesleyinstitute.com/policy-fields/healthcare-reform/roadmap-for-health-equity/health-equity-impact-assessment/>



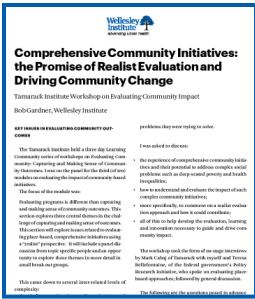
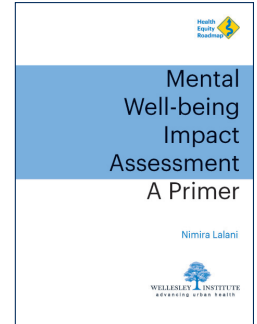


## Towards a Social Assistance System that Enables Health & Health Equity

People living on social assistance are among the poorest and most vulnerable in society. Ontario has established a Commission to review the provincial social assistance system. A broad collaboration of health sector leaders came together to provide input to the Commission, and Wellesley wrote the submission. We wanted to ensure that equity is taken into account in the Commission's deliberations and we set out a comprehensive model of a health enabling social assistance system.

## Mental Well-Being Impact Assessment

Mental Well-Being Impact Assessment is a promising specific variant on the Health Equity Impact Assessment. Wellesley has also been involved with or supported considerable community-based research on social determinants, resilience and other facets of mental health, and has partnered with the Canadian Mental Health Association-Ontario. <http://www.wellesleyinstitute.com/blog/planning-for-health-equity-mental-health-promotion-and-care>



## Comprehensive Community Initiatives

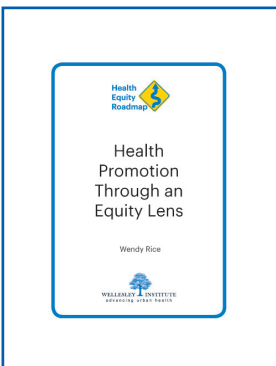
A pre-condition for advancing health equity is building the broad community and political mobilization needed to force the necessary major policy changes and addressing determinants on the ground at local levels. This research examines the potential of broad community collaborations and cross-sectoral initiatives to address the roots of poverty and inequality.



## Addressing "Wicked" Policy Problems

This article for the federal government's online journal *Horizons* carries forward the analysis of comprehensive community initiatives to argue that they have great policy potential. It sets out the policy, regulatory, funding and capacity-building enablers that can achieve this potential.

<http://www.wellesleyinstitute.com/blog/policy-solutions-for-wicked-and-complex-social-problems/>



## Health Promotion Through an Equity Lens

Health promotion is crucial to keeping people well and preventing illness. A major challenge is that many programs do not take peoples' unequal conditions and opportunities into account, are consequently not effective for vulnerable and marginalized communities, and can actually make disparities worse if they are taken up disproportionately by the more advantaged. This paper analyzes how equity can be built into health promotion.

The Wellesley Institute is a Toronto-based non-profit and non-partisan research and policy institute. Our focus is on developing research and community-based policy solutions to the problems of urban health and health disparities.

